

# RETINA<sup>®</sup> Network Security Scanner

## Unsurpassed Vulnerability Assessment & Remediation

**T**oday's complex computing environments have become increasingly susceptible to the unrelenting number of network vulnerabilities. These vulnerabilities are being leveraged into exploits and attacks faster than ever before, significantly decreasing your opportunity to remediate. As an example, the recent MSBlaster worm was based on exploit code released only 16 days prior; 27 days after the initial announcement of the vulnerability.

This increased demand on IT requires a proactive vulnerability management process. This goes beyond the routine deployment of patches, which do not rectify security holes created by misconfigured devices and non-compliance with internal policies. Organizations must identify critical vulnerabilities and related weaknesses to facilitate the strategic protection of assets according to business objectives and policies. A consistent vulnerability assessment strategy reduces liability and the overall cost of effectively securing your network and protecting your business.

With a complete understanding of a network's assets and their vulnerabilities, organizations can weigh business objectives with the prioritization of remediation efforts. Fortunately, a Gartner Group study estimates that 90% of network attacks through 2005 will exploit known vulnerabilities. The ability to protect your network against the thousands of known vulnerabilities is within reach.

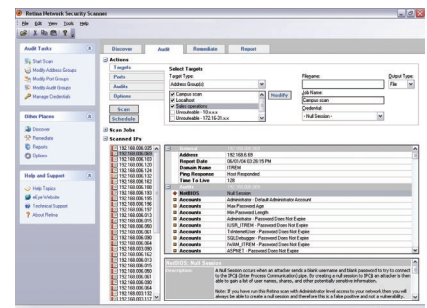
### Unsurpassed Vulnerability Assessment and Remediation

Retina<sup>®</sup> Network Security Scanner is a proven solution designed to meet the stringent requirements of today's security professionals. Retina's award-winning technology gives users the tools required to effectively identify and remediate the vulnerabilities that leave their networks susceptible to malicious attacks. Retina enables users to secure their networks by:

- **Accurately discovering all the assets in a network infrastructure** including operating system platforms, networked devices, databases and third party or custom applications. Retina also discovers wireless devices and their configurations, ensuring these connections can be audited for the appropriate security settings. Additionally, Retina scans active ports and confirms the services associated with those ports.
- **Implementing corporate policy driven scans** to audit internal security guidelines and ensure that configuration requirements are enforced and comply with defined standards on an ongoing or daily basis. These custom scans can also assist with meeting any regulatory compliance requirements customers may face.
- **Incorporating the most comprehensive vulnerabilities database** and scanning technology available, allowing users to proactively secure their networks against attacks. Retina was developed and is constantly updated by eEye Digital Security's Research Team and leverages its expertise and superior vulnerability discovery methodology. Updates are automatically obtained at the beginning of each Retina session.
- **Providing a workflow approach to vulnerability management.** Retina's user interface allows for multiple views and reporting options with which to analyze assessment data. This gives users the opportunity to view asset criticality correlated with complete vulnerability data. This approach allows users to effectively prioritize remediation efforts.

### Fast Facts

- Accurately discovers all the assets in the network infrastructure
- Non-intrusive scanning technology ensures optimum performance of networks during scans
- Leverages the most comprehensive vulnerability database available today
- Allows users to create custom, corporate policy driven scans to enforce internal security guidelines
- Open architecture for customized audits and integration with third party platforms



eEye Digital Security<sup>®</sup>

# RETINA<sup>®</sup> Network Security Scanner

## Features and Benefits

- **Accurate Asset Discovery and Inventory**  
Retina's scanning technology discovers all the assets on a given network, including operating system, application platforms, databases and wireless devices. In addition to using ICMP, registry and NetBIOS OS detection, Retina was the first commercial scanner to incorporate Nmap's Fingerprint Database, the most comprehensive database of OS fingerprints available. Additionally, Retina has profiles for nearly 2,000 of the most commonly utilized ports, and allows for scanning of all 65,536 ports on a network device. This facilitates the detection of covertly placed Trojans, spyware and unconventional services.
- **Custom Security Audits**  
Allows users to create custom audits to ensure corporate security policies such as required anti-virus deployments, compliance with application version control, allowable ports, file sharing, P2P, etc., are enforced. Custom audits can also be created to enable regulatory compliance requirements.
- **Customizable Views and Reports**  
Retina's interface provides multiple views and options with which to sort discovery and vulnerability data. Retina also offers complete technical and executive reports, as well as customizable reports that can be tailored for specific content.
- **Remediation Management**  
Retina allows for the prioritization of remediation efforts through its intuitive user interface, by categorizing vulnerabilities according to risk level. Retina also allows for integration with third party remediation automations solutions such as help desk and ticketing systems. Additionally, the Fix-it function can be used to remotely correct common system security issues such as registry settings, file permissions and more.
- **Non-Intrusive Scanning**  
Retina utilizes intelligent scanning techniques that are non-intrusive and do not test by using exploit code. eEye is able to deliver on this process through its extensive experience in vulnerability discovery and testing, as well as the product maturing through thousands of deployments at some of the largest distributive networks in the world.
- **Comprehensive Vulnerability Database**  
Retina leverages the most up to date scanning technology, which is updated automatically at the beginning of every Retina session. Retina is maintained by the eEye Digital Security Research and Development Team and leverages its years of expertise and superior vulnerability discovery methodology.
- **Smart Protocol Scanning**  
Retina reconciles the input/output data on each port to determine which protocols and services are actually running, including SSL. In this way, Retina makes adjustments for custom or unconventional machine setup. Retina will never assume a service running on a given port.
- **Advanced Scheduling Capabilities**  
Retina's scheduler function allows you to set the scanner to run on a regular basis to periodically check for vulnerabilities. Because Retina is non-intrusive, you can pre-schedule your scans without the risk of unplanned network downtime.
- **Open Architecture for Advanced Customization**  
Retina's open architecture allows you to develop vulnerability tests and auditing modules tailored to your organization's specific requirements. You can also define the included audits, make custom changes to the Retina interface and more. A documented set of APIs is provided to simplify the process of building custom scans in your preferred programming language and integrating them into Retina.

## System Requirements

- Windows NT 4.0 SP6a/2000/XP/2003
- Internet Explorer Version 5.0 or higher
- 256 MB of memory
- 40 MB of free disk space
- Network connection



## About eEye Digital Security

eEye Digital Security is a leading developer of network security products that deliver unsurpassed levels of protection against malicious attacks and vulnerabilities. A global company with offices in the US and throughout Europe, eEye helps protect the digital assets of major corporations and government entities in over 80 countries.

eEye Digital Security  
www.eEye.com

U.S. Tel: 1.866.339.3732  
N. America: 1.949.900.4100  
Geneva: +41 22.718.7700  
London: +44 (0) 208.956.2270

N. America: sales@eeye.com  
International: sales.eu@eeye.com



eEye Digital Security<sup>®</sup>

VULNERABILITY IS OVER